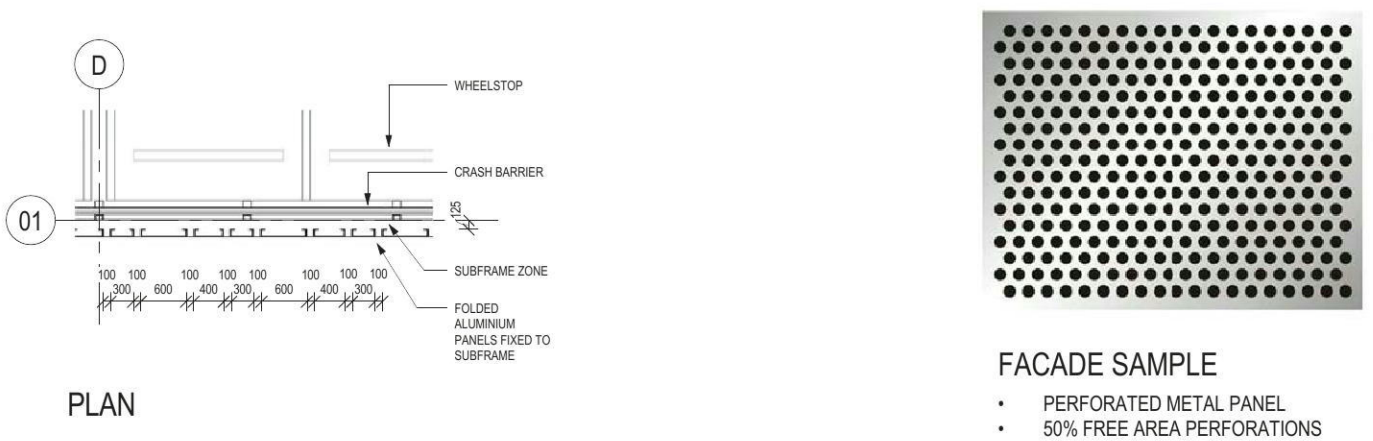
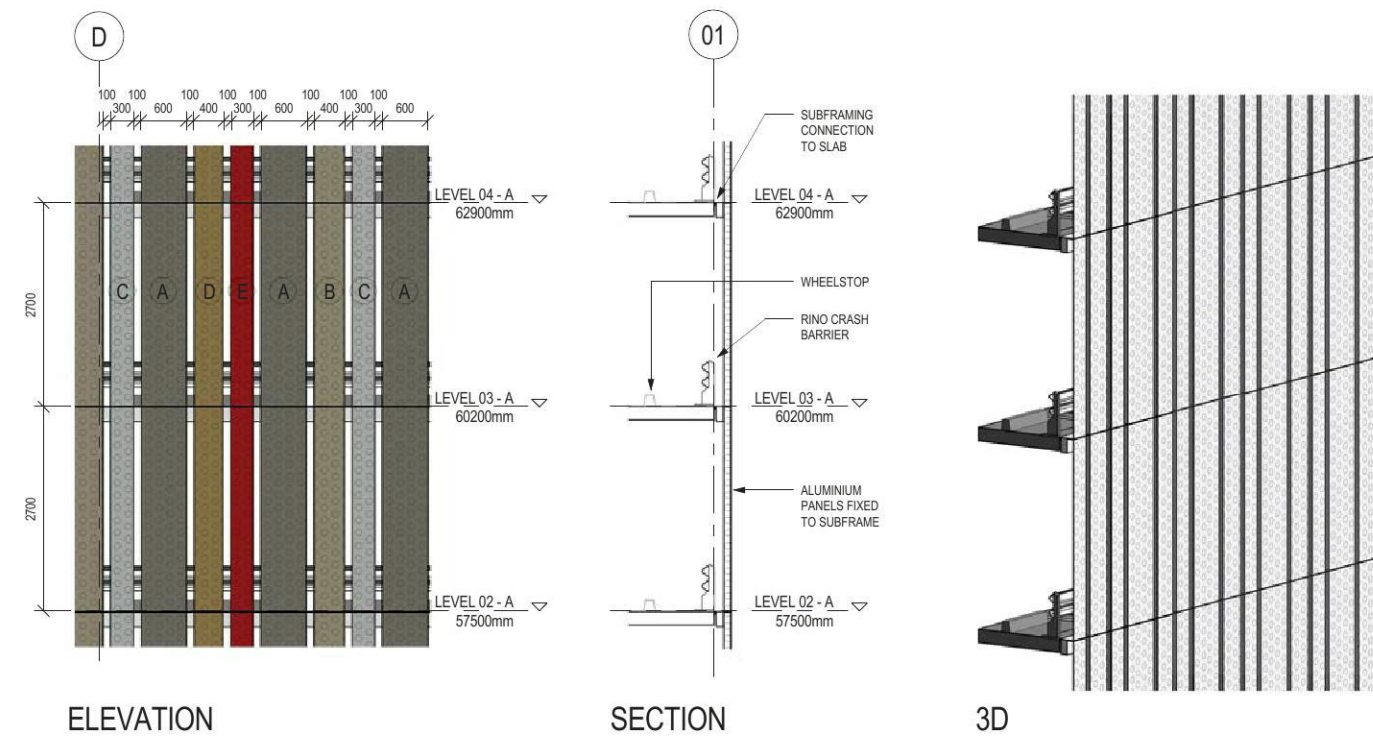


MAIN FACADE SYSTEM

The main façade system comprises of a modular unitised system made up of perforated aluminium panels supported by a subframing system. Panel widths vary in dimension and colour variation providing a more dynamic reading of the façade system and a point of difference to the existing hospital building stock.

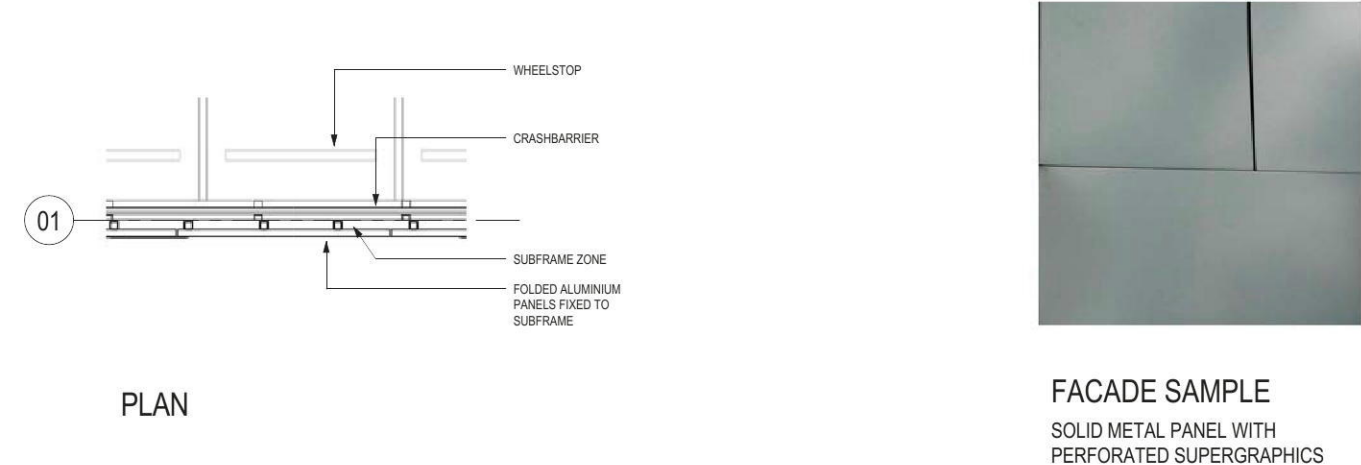
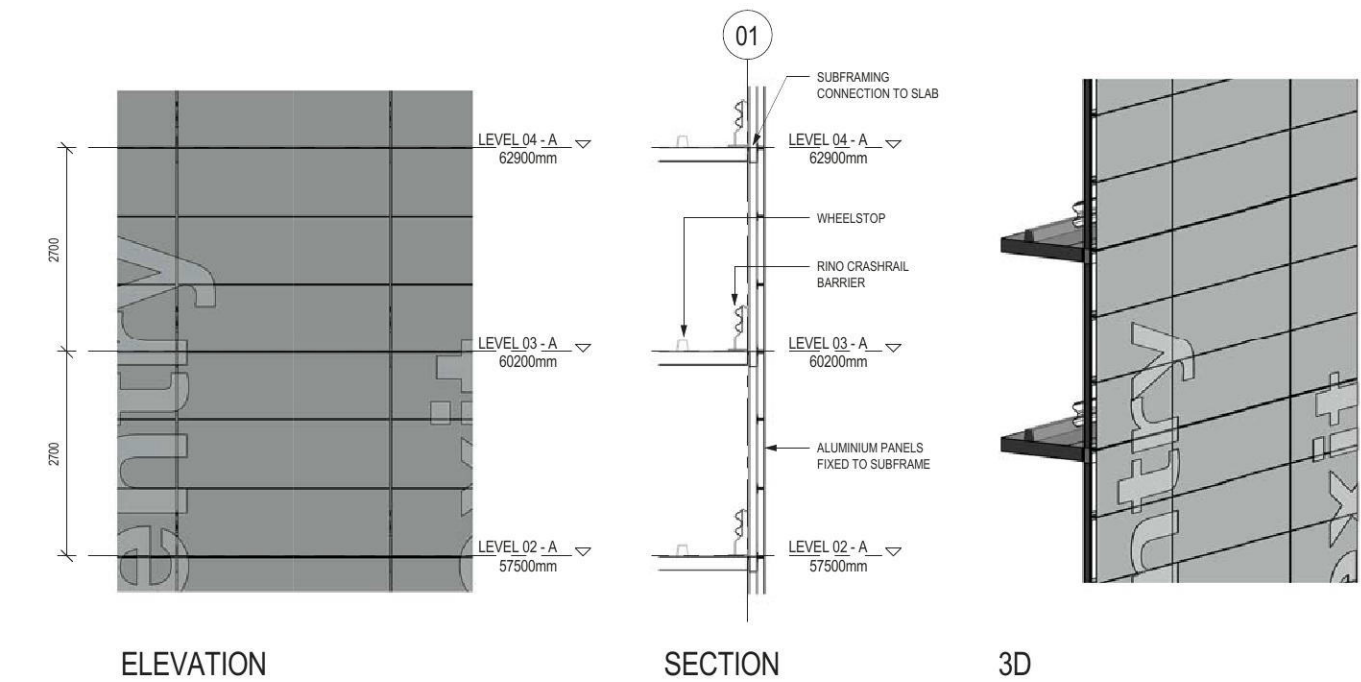
- The façade seeks to:
- Effectively address light spill from inside along Parker Street and Barber Ave boundaries
  - Provide the required ventilation requirements (50% free area)
  - Edge protection and safety for patrons
  - Express a vertical language to offset the horizontal form of the carpark structure

The colour palette of the main façade seeks to respond to the character and identity of the site and landscape context of the Nepean Blue Mountain region. Using grey, red and yellow tones, the proposal seeks to represent the colour range of the native Cumberland Plain Shale Woodland and is sympathetic to the proposed landscape solution.



FACADE ABOVE ENTRY/EXIT POINTS

The façade system above the ground level entry and exit points comprises of a modular unitised system made up of generally solid aluminium panels supported by a subframing system. Panels are arranged in a large format and horizontal in nature to provide a contrast to the main vertical façade system and will ultimately assist in the wayfinding strategy for staff and public approaching the carpark by car.

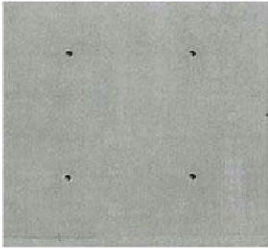
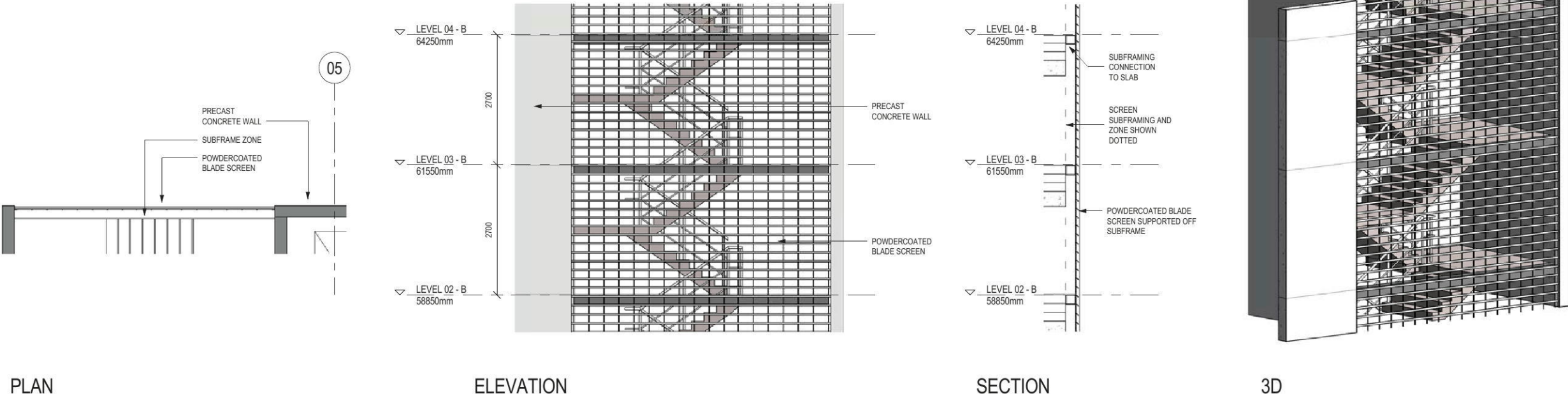


FACADE AROUND CORES

The façade system around the main lift core comprises of a precast concrete panel system. The outward face of the fire stairs are open to address BCA requirements.

- The arrangement and language of the cores seeks:
- Provide a vertical language to offset the horizontal form
  - Provide articulation and depth
  - Focal point in order to enabling clear wayfinding in the context of the campus and approach from the main hospital
  - Link bridge integration to existing North Block from the main lift core
  - Integration of an entry forecourt at ground level around the main lift core

The colour palette is monotone (whites and light greys) to contrast with the colours of the main façade system.



FACADE SAMPLE  
PRECAST OFF FORM CONCRETE  
FINISH

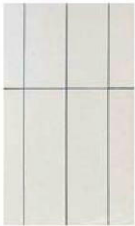
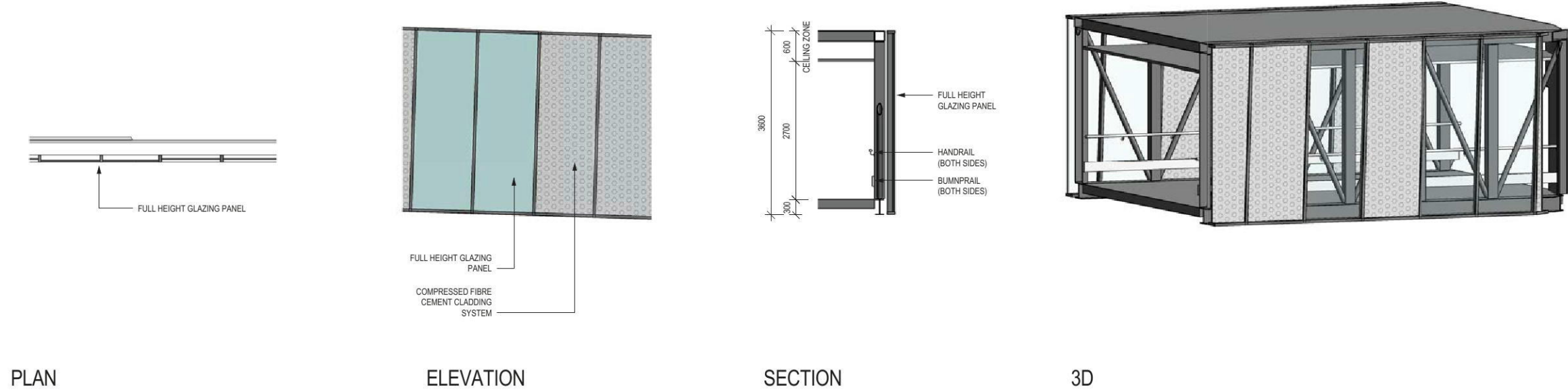


FACADE SAMPLE  
HORIZONTAL SCREEN SYSTEM IN  
GALVANISED FINISH

LINK BRIDGE FACADE

The façade system containing the link bridge comprises of a modular unitised panel system and glazing suites.

The colour palette is monotone (whites and light greys) to slightly contrast the existing façade colour of North Block.



FACADE SAMPLE  
COMPRESSED FIBRE CEMENT PANEL  
IN GREY FINISH



FACADE SAMPLE  
GLAZING UNIT